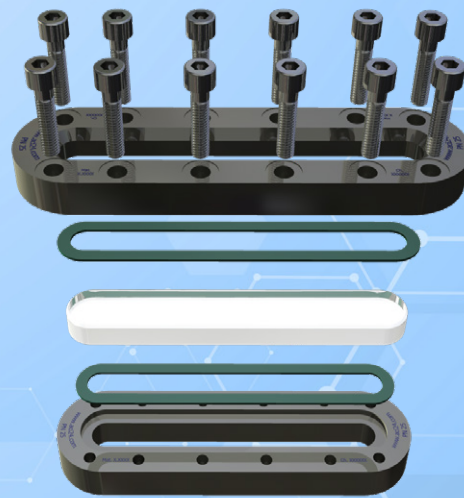
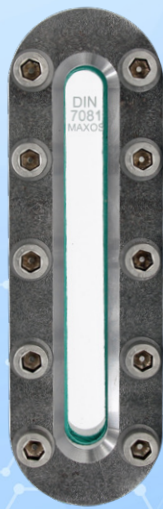




Rectangular sight glass PN 25

for welding in or on, wide visibility

Type 337



APPLICATION:

Observation and illumination of the liquid level inside closed vessels (boilers, tanks, silos, etc.).

These sightglasses are angular flange sockets for welding in or on, each completed with a firmly screwed sightglass plate inserted between the seals.

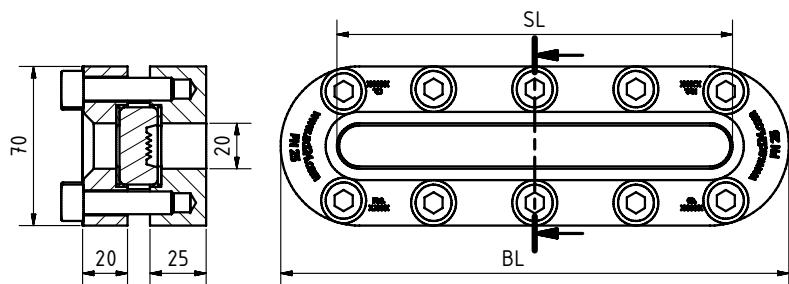
INSTALLATION NOTE:

After the base frame has been welded in, check whether the sealing surfaces have warped! If necessary, rework must be performed! Please also observe the specified torques for the screw connection! The operating pressure does not apply to the base frame, which must be checked together with the pressure device according to AD data sheet B9!

Oval version with
20 mm viewing panel
($\Delta P \leq 25$ bar)

Operating conditions:

Temperature: (depending on glass and gasket)	100 °C 243 °C
Pressure:	≤25 Bar



Materials:	
Flange:	1.4571, 1.4404, P265GH
Glass:	Borosilicate glass similar to DIN 7081 Reflective and transparent
Gasket:	PTFE; FKM; NBR; C4400; Silicone; EPDM; Graphite
Screws:	A4-70
Special materials on request	

BL	SL	Kg	Tightening torque ¹ (Nm)
176	126	3,3	13 ... 34 ¹
226	176	4,2	13 ... 34 ¹
256	206	4,8	13 ... 34 ¹
316	266	5,9	13 ... 34 ¹
376	236	7,0	13 ... 34 ¹
436	386	8,1	13 ... 34 ¹
496	446	9,2	13 ... 34 ¹
536	486	10,0	13 ... 34 ¹

¹ graphite gasket



Rectangular sight glass PN 25

for welding in or on, wide visibility

Type 337

PRODUCTCODE:

Group	TYPE	ovr. length	Base frame*	Glass	Gasket	Variant
11	337	176 226 256 316 376 436 496 536	1: P265GH 2: 1.4571 3: 1.4404 7: Duplex 8: Special	1: Borosilicate glass (Boro) DIN 7081 transparent 3: Borosilicate glass (Boro) DIN 7081 reflex 6: Special	1: PTFE 2: FKM 3: NBR 4: C4400 5: Silicone 6: EPDM 7: Graphite 8: Special	Assigned by ACI if required

INFO: Unless otherwise stated, the factory standard highlighted is supplied.

*Cover frame according to quotation / order confirmation.

SPECIAL DESIGNS/OPTIONS:

- a) High temperature version on request
- b) Other options on request

EXAMPLE:

11-337-226-2-1-7-000 equals the product code:

ACI Type 337

226 mm long

Base frame 1.4571

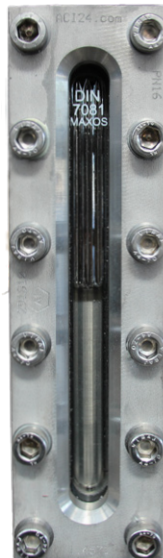
Borosilicate glass

gasket graphite

standard version

REFLEX AND TRANSPARENT GLASS:

A reflex sight glass is recommended for dark media, dark or non-illuminated vessels. (see adjacent picture) Due to the refraction of light in the integrated prisms, the fill level may be better visible. However, if the vessel is illuminated, the medium is very bright or the colour of the medium must be visible, a transparent glass should be used. We are happy to help you with the selection.



RECOMMENDATION:

For aggressive media or steam, mica discs should be used to protect the glass.

Contact in Germany:

ACI Industriearmaturen GmbH

Tel. +49 (0) 2403 748 850

info@aci24.com • www.aci24.com

Contact in Hungary:

Metaball KFT.

metaball@metaball.hu or +36 203828867

H-2700 Cegléd, Kazinczy u. 16.

20190902

Technical changes and errors reserved!