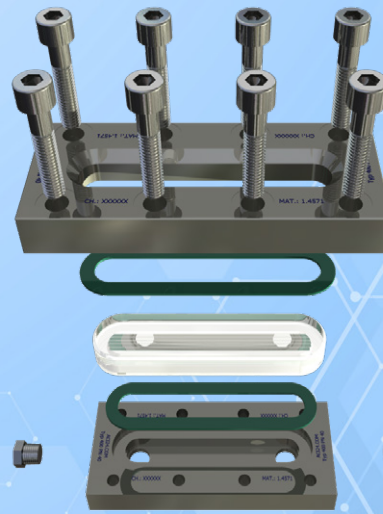




Rectangular sight glass PN 16 / 35

Level indicator with ϕ 18 mm rear drill holes

Type 400



APPLICATION:

Observation and illumination of the liquid level inside closed vessels (boilers, tanks, silos, etc.).

These sightglasses are rectangular flange sockets with 18 mm holes on the back for welding in, each completed with a firmly screwed sightglass plate inserted between the gaskets.

INSTALLATION NOTE:

After the base frame has been welded in, check whether the sealing surfaces have warped! If necessary, rework must be performed! Please also observe the specified torques for the screw connection!

Rear drill holes ϕ 18 mm
($\Delta P \leq 16 / 35$ bar)

Operating conditions:

Temperature: (depending on glass and gasket)	243 °C Borosilicate glass 320 °C Mica protected
Pressure:	$\leq 16 / 35$ Bar

DRILL HOLES:

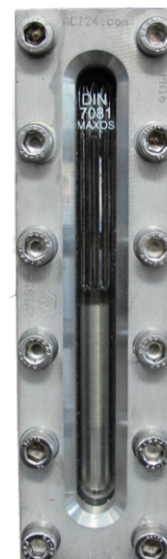
The $\phi 18$ mm drill holes are located on the back. Other diameters are also available on request if technically possible.

Materials:

Flange:	1.4571, 1.4404
Glass:	Borosilicate glass DIN 7081 Reflex or transparent glass
Gasket:	PTFE; FKM; NBR; C4400; Silicone; EPDM; Graphite
Screws:	A4-70
Special materials on request	

REFLEX AND TRANSPARENT GLASS:

A reflex sight glass is recommended for dark media, dark or non-illuminated vessels. (see adjacent picture) Due to the refraction of light in the integrated prisms, the fill level may be better visible. However, if the vessel is illuminated, the medium is very bright or the colour of the medium must be visible, a transparent glass should be used. We are happy to help you with the selection.

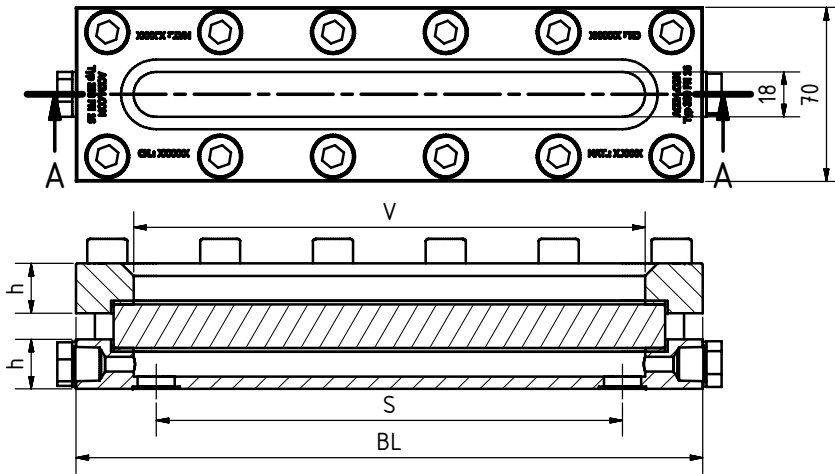




Rectangular sight glass PN 16 / 35

Level indicator with ϕ 18 mm rear drill holes

Type 400

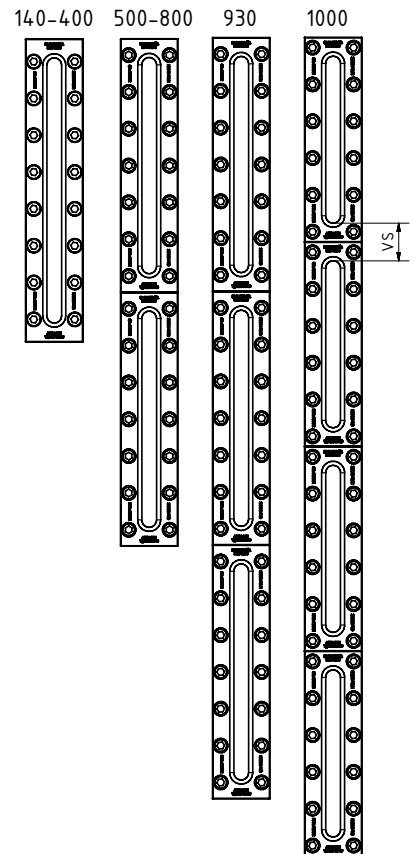


CONCEALED VIEW (VS):

Concealed visibility is formed in the area between the individual longitudinal glasses for level indicators of long sizes. Because of the manufacturing length of the longitudinal glasses in accordance with DIN 7080, a concealed view cannot be avoided from an overall length of 500 mm onward. The layout of the sizes 140 mm to 1000 mm can be seen in the following illustration.

BL	V	S	Concealed view (VS)	h (PN16)	h (PN35)	Kg (PN16)	Kg (PN35)	tightening torque ² (Nm)
140	79	61	0	20	25	2,8	3,4	13...34
170	124	106	0	20	25	3,2	4,0	13...34
220	174	156	0	20	25	4,0	5,0	13...34
250	204	186	0	20	25	4,6	5,7	13...34
300	264	246	0	20	25	5,3	6,7	13...34
310	264	246	0	20	25	5,6	7,0	13...34
350	304	286	0	20	25	6,3	7,8	13...34
370	324	306	0	20	25	6,6	8,2	13...34
400	354	336	0	20	25	7,1	8,9	13...34
500	454	436	1x46	20	25	9,1	11,4	13...34
600	564	546	1x46	20	25	10,7	13,4	13...34
620	574	556	1x46	20	25	11,1	13,9	13...34
700	654	636	1x46	20	25	12,5	15,7	13...34
740	694	676	1x46	20	25	13,2	16,5	13...34
800	754	736	1x46	20	25	14,2	17,8	13...34
930	884	866	2x46	20	25	16,7	20,9	13...34
1000	954	936	3x46	20	25	18,2	22,8	13...34

²graphite gasket





Rectangular sight glass PN 16 / 35

Level indicator with ϕ 18 mm rear drill holes

Type 400

PRODUCTCODE:

Group	TYPE	ovr. length	Base frame*	Glass	Gasket	PN	Variant
11	400	140 170 220 250 300 310 350 370 400 500 600 620 700 740 800 930 1000	2: 1.4571 4: 1.4404 5: Duplex 8: Special	1: Borosilicate glass (Boro) DIN 7081 transparent glass 3: Borosilicate glass (Boro) DIN 7081 reflex glass 5: untempered borosilicate glass transparent glass	1: PTFE 2: FKM 3: NBR 4: C4400 5: Silicone 6: EPDM 7: Graphite 8: Special	1: 16 2: 35	Assigned by ACI if required

INFO: Unless otherwise stated, the factory standard highlighted is supplied.

*Cover frame according to quotation / order confirmation.

SPECIAL DESIGNS/OPTIONS:

- a) High temperature version on request
- b) LED or halogen lights, ATEX-certified, EX
- c) Other options on request

EXAMPLE:

11-400-400-2-3-7-1-0 equals the product code:

ACI Type 400
400 mm long
Base frame 1.4571
Borosilicate glass reflex
gasket graphite
PN16
standard version

RECOMMENDATION:

For aggressive media or steam, mica discs should be used to protect the glass.

(Not possible with reflex sight glasses as they would lose their function.)

Contact in Germany:
ACI Industriearmaturen GmbH
Tel. +49 (0) 2403 748 850
info@aci24.com • www.aci24.com

Contact in Hungary:
Metaball KFT.
metaball@metaball.hu or +36 203828867
H-2700 Cegléd, Kazinczy u. 16.

20190917

Technical changes and errors reserved!