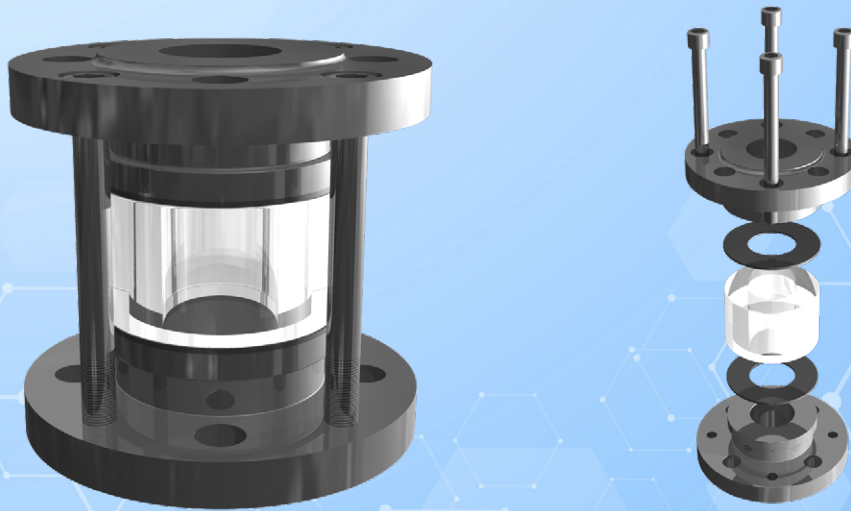




# Tubular sight glass PN 16

with flange connections to DIN 1092-1 / (2633)

# Type 670



### APPLICATION:

For observation of filling and flow in pipelines. The sight glass provides reliable 360° monitoring of the function and performance of individual devices as well as entire systems.

Tubular sight glasses type 670 are suitable for installation between flanges according to DIN 1092-1 PN16. The sight glass is free of dead space when mounted properly.

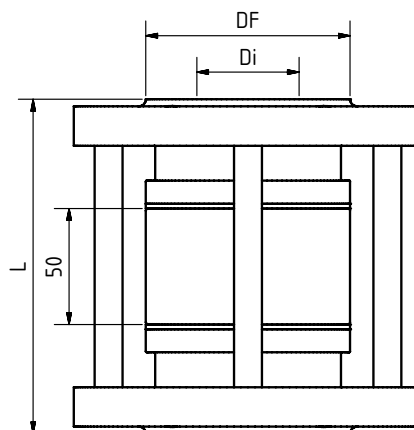
### INSTALLATION NOTE:

The flange bolting is taken into account and required for design tightness. Gaskets suitable for the sealing surfaces should be used. The screw material should be equivalent to or higher than those of the sight glass body. If possible, the screw thread and the screw head should be lubricated. Tubular sight glasses must be installed in such a way to prevent pipe forces (tension, pressure and torsion), vibrations and pressure shocks from affecting the fitting!

**With flange connections according to DIN 1092-1 ( $\Delta P \leq 16$  bar)**

### Operating conditions:

Temperature:	300 °C Borosilicate glass (depending on glass and gasket)	
Pressure:	$\leq 16^1$	Bar
<sup>1</sup> higher see Type 671		



### Materials:

Flange:	1.4571
Glass tube:	Borosilicate glass Quartz glass
Gasket:	PTFE; FKM; NBR; C4400; Silicone; EPDM; Graphite
Screws:	A4-70
Special materials on request	

DN	10	15	20	25	32	40	50	65	80	100	125	150
Di	13	18	22	29	38	44	55	71	83	108	132	160
DF	40	45	58	68	78	88	102	122	138	158	188	212
L	134	134	134	134	144	144	146	148	148	158	158	164
Kg	1	3	3,5	4	6	7	9	11	13	15	19	24
PN	16	16	16	16	16	16	16	16	16	16	16	16
Outer diameter, bolt circle and holes according to DIN 1092-1 PN16												



# Tubular sight glass PN 16

with flange connections to DIN 1092-1 / (2633)

# Type 670

## PRODUCTCODE:

Group	TYPE	DN	Flange	Glass tube	Gasket	Variants
11	670	1: 10 2: 15 3: 20 4: 25 5: 32 6: 40 7: 50 8: 65 9: 80 10: 100 11: 125 12: 150 16: Special	<b>1: 1.4571</b>	<b>1: Borosilicate glass</b> 2: Quartz glass 4: Special	1: PTFE 2: FKM 3: NBR 4: C4400 5: Silicone 6: EPDM <b>7: Graphite</b> 8: Special	Assigned by ACI if required

**INFO:** Unless otherwise stated, the factory standard highlighted is supplied.

### SPECIAL DESIGNS/OPTIONS:

- a) High pressure version (Type 671 PN 25 / 40)
- b) ASME 16 B variant
- c) Additional options on request

### EXAMPLE:

**11-670-10-1-1-7-000 equals the product code:**  
 ACI Type 670  
 DN100  
 flanges 1.4571  
 borosilicate glass  
 standard version

### ATTENTION!

The pressure-temperature limits according to DIN EN 1092-1 apply!

Our tool of the same name is available on our website for this purpose.  
([www.ACI24.com](http://www.ACI24.com), in the category Service, Tools)



### HIGHER OPERATING PRESSURES:

In individual cases, higher operating pressures than those specified may be possible. Please contact us if necessary.

Contact in Germany:  
 ACI Industriearmaturen GmbH  
 Tel. +49 (0) 2403 748 850  
[info@aci24.com](mailto:info@aci24.com) • [www.aci24.com](http://www.aci24.com)

Contact in Hungary:  
 Metaball KFT.  
[metaball@metaball.hu](mailto:metaball@metaball.hu) or +36 203828867  
 H-2700 Cegléd, Kazinczy u. 16.

20190913

Technical changes and errors reserved!